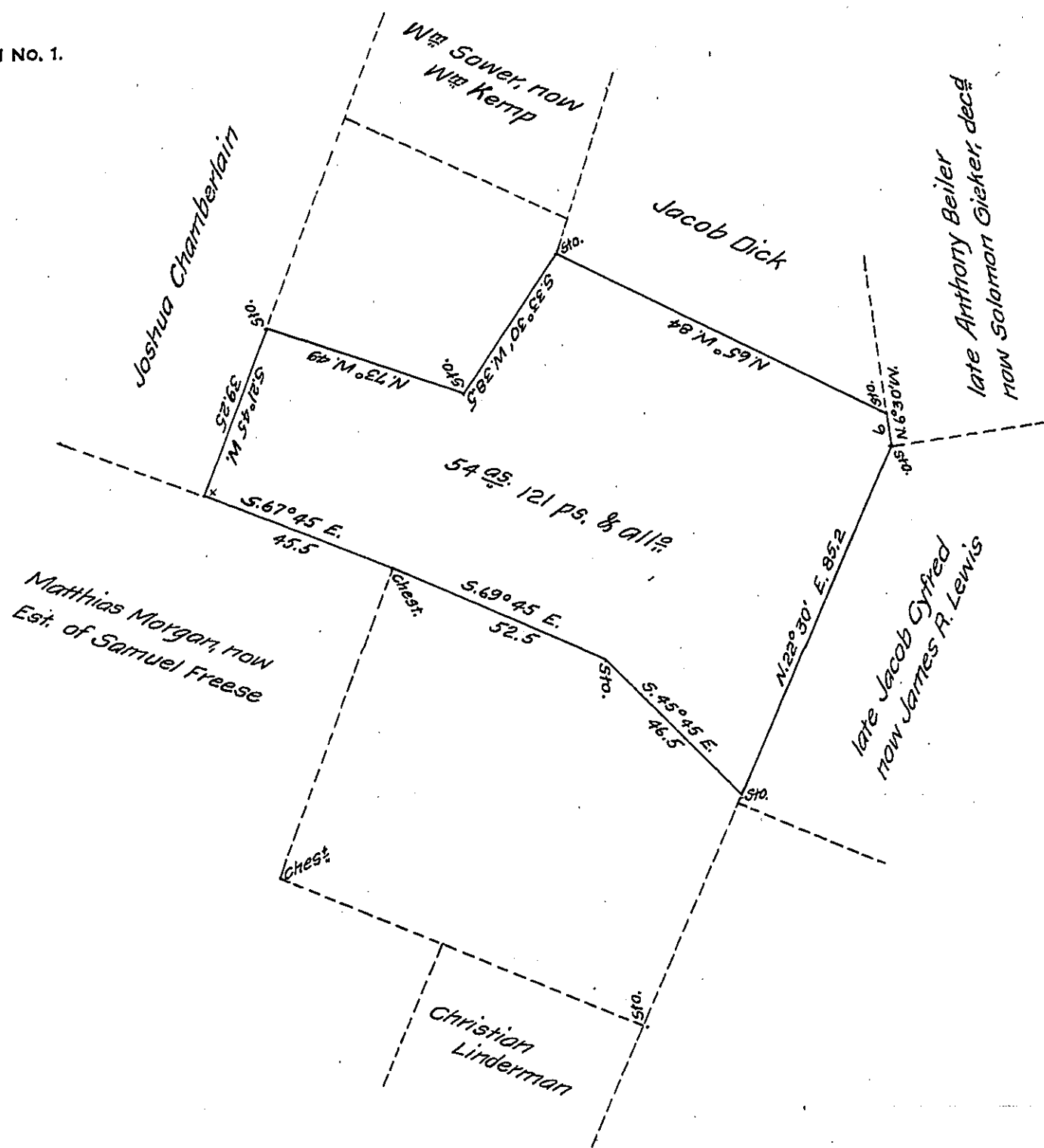


FORM NO. 1.



Draft of a tract of land situate in Robeson Township, Berks County, containing Fifty-four acres and 121 perches and allowance of six per cent. part of a larger tract of One hundred and Nine acres and Seventy-five perches & allance.

Surveyed to George Sower in pursuance of a warrant dated 31st of October, 1750 resurveyed a part for Dominicus Krertp & Matthias Krather the 4th day of October, 1864.

pr. D. S. Zacharias,

*To James P. Barr, Esq.,
Surveyor General
Penn'a.*

C.S.

IN TESTIMONY that the above is a copy of the original remaining on file in the Department of Internal Affairs of Pennsylvania, made comformably to an Act of Assembly approved the 16th day of February 1833, I have hereunto set my hand and caused the Seal of said Department to be affixed at Harrisburg, this twenty-eighth day of January 1908

Henry Howard
Secretary of Internal Affairs.